

car
ing
sh
ar
ing
pr
ep
ar
ing



Paraparaumu Beach School

Newsletter 2019/21

2 July 2019

Upcoming Events

TERM 2

WEEK 10

- **Tues, 2 July**
 - ◊ Regional Cross Country
- **Wed, 3 July**
 - ◊ Hillary Houston visiting Rm 4
- **Fri, 5 July**
 - ◊ Mid-year reports come home for all but Yr 5/6 students
 - ◊ Last day of term—school closes at 3pm as usual

TERM 3

WEEK 1

- **Mon, 22 July**
 - ◊ First day of Term 3
- **Tues, 23 July**
 - ◊ BOT Meeting 7pm

WEEK 2

- ◊ Life Education Trust—Te Moana Syndicate (Yr 5/6)
- **Wed, 31 July**
 - ◊ Parent-Teacher Interviews Yrs 0-4 and Yrs 7/8—**School closes at 2pm**

WEEK 3

- **Tues, 6 August**
 - ◊ Junior Winter Tournament (8 Aug p/p date)

WEEK 4

- **Tues, 13—Wed, 14 Aug**
 - ◊ Junior class photos and team/group photos

PRINCIPAL'S MESSAGE

Hi Everyone!

The end of Term 2 is only days away. We've had such a fun-filled term and I have certainly loved visiting classrooms to see learning in action. I got to participate in science, sewing, netball, rippa rugby, maths, reading groups, writing sessions, singing, craft and construction and my favourite for the term...rocket launching!

We also had a brilliant time at the School Fun Run fundraiser last week. The PTA did a superb job of organising this event and the kids seemed to laugh all the way round. I am looking forward to seeing some of the photo booth images that were taken at the end of each lap. It wasn't surprising to see how an injection of silliness affected students' mood and energy levels. **Thanks PTA, this event was simply good fun!**

As mentioned in last week's newsletter we are seeking parent feedback on our Play, Eat, Learn trial. Students and Staff are being surveyed at school this week by Mike Thomas and I'm keen to collect parent feedback via three easy questions. Follow the link below to tell us your thoughts: https://docs.google.com/forms/d/e/1FAIpQLSdLicHa3QNpwCRVpZVa4u8eOKVtVFNHTs4eEFuXDBJUY2jgnw/viewform?usp=sf_link This link will also be on our school Facebook page for ease of access.

I'm off to the NZ Principals Federation Conference in Auckland for the next three days, but before I go I'd like to take the opportunity to farewell Tony Webb and wish him all the very best for his new position as Principal of Sacred Heart School in Reefton. It was great to see the sun streaming down on him (see photo) at assembly this morning as the kids farewelled him with our school waiata.

See you all next term; I hope all the kids have a safe and happy break!

Kind regards

Jess Ward - Principal ~ Tumuaki



TREE PLANTING UPDATE—4 WEEKS TO GO!

Thank you to the families who have sponsored trees! We have around 80 trees sponsored so far. This is a great start and we are on the way to achieving the goal of planting a tree for every child in the school. It is not too late to sponsor a tree – please see the last newsletter or KINDO for details on how to do this. Your support is very much appreciated!

We are also incredibly lucky and grateful to have the generous support of local businesses to help us make this project happen, including the Kapiti Coast Airport, the Paraparaumu Beach Golf Course, Composting New Zealand Limited, A1 Homes and The Perfect Angle. Their support will go a long way to making our school grounds a safer and healthier environment for birds, as well as an enjoyable place for children now and in the future.

Planting will take place in the second week of term 3, beginning on July 29th (weather permitting). All children at the school will help to plant a tree. If you can help us digging holes or assisting children to plant any time early that week, we would love to hear from you! Contact David Parr at birdsavers@pbs.school.nz



Thank you!

The Paraparaumu Bird Savers Student Group

REPORTING TO PARENTS

This Friday, Students in Years 1-4 and 7-8 will receive their mid-year report. This will come home in an envelope addressed to parents. In cases where parents/caregivers live at different addresses, a secondary copy will be posted out (if this has been requested via the school office).



Parent-Teacher interviews for these year levels will be held in the second week of Term 3 (Wed, 31 July) from 2pm - 8pm. This means **school will close at the earlier time of 2pm on this day**. You can book an interview time by going to www.schoolinterviews.co.nz, enter the code nta4y and follow the prompts.

WERE YOUR EARS BURNING? Staff Gratitude Section

Thank you to all staff for embracing our Play, Eat, Learn trial. Changes in the school timetable have meant many adjustments and I've appreciated the can-do attitude staff have shown.



WERE YOUR EARS BURNING? Student Gratitude Section

Over the last term we have had a group of amazingly kind and selfless senior students (pictured right) who have given up some of their own playtimes to support younger students to have a happy and productive time. Last week, these students enjoyed a special morning tea with the staff to thank them for being incredible role models of the school CREST values.



ISSUES WITH PUNCTUALITY

Yes the mornings are colder, and it's harder to get kids out of bed, but it is vital that they arrive at school before the 8.55am bell. The number of students arriving after the bell has risen this term and on more than 6 occasions we have had 20+ kids arrive late!

So please set that alarm clock extra loud and 10 minutes early, so that we can improve these statistics. If we can teach reliability and good time management young, it will continue to benefit kids throughout their lives.

NEW FROM NZ POLICE

NZ Police have asked schools to let their communities know about their new, recently launched, non emergency number, 105. This phone number will make it easier to get hold of police in the event of non-urgent situations or 'Things which have Already Happened', which don't require Police assistance immediately.

You can call the police on 105 for all non emergencies, or you can go online at 105.police.govt.nz to report things like:

- Lost property
- Theft for a public place or car
- Intentional property damage
- Or to get an update or add info to a previous report

In the event of an emergency, always call 111 - Things that are Happening Now.



KID'S QUOTE

Recently I commented on what a fantastic can-do attitude an 8 year old was showing. Her response was...

"I have a positive mind set!"

Something tells me this student will go far in life. Kia kaha e hoa ma!

SCHOOL FUN RUN

We would like to thank our parent volunteers who made it possible for us to host our first ever whole School Fun Run: Aretha Harris, Kylie Morrell, Tina Collier, Tiffany Stratford, Cherie Wood, Alna Thompson, Jenny Clement, Vanessa Kellogg and Fiona Turner all gave up their valuable time to help organise and run the event. Without these wonderful ladies we would not have been able to host such a successful event and raise the much needed money for Stage 3 of the playground.

Don't forget to confirm/order your child's prizes for the Fun Run online by Thursday. Pre-selecting the prizes doesn't mean these are the prizes your child will receive. They were their wish list items and you now need to go online to confirm or select different prizes based on how much sponsorship your child received.

Also, please remember to send in any cash donations as your prizes will be affected if you don't bring it in to either the office or Mrs McKnight in Rm 23 before Thursday.



WOOD OFFCUTS

Are you a builder? Or do you know anyone who would have some 2x1 woodcuts surplus to requirements?

John Trask has a little project which requires some 2x1 timber offcuts, treated or untreated. So if you have some please drop them off outside his workshop (opposite the staffroom). CHEERS!



RECENT STUDENT ACHIEVEMENTS

Karate Dojo: Congratulations to Faith Maharaj who won 3 gold medals in Kata, Kumite and Group Kata at the recent Wellington Regional Competition.

10k Marathon: Congratulations also to Faith Maharaj who completed the 10km marathon in Wellington recently in a time of 80 minutes. Well done!

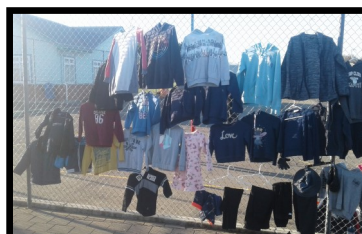
Hockey: Congratulations to the following students who have made representative sides for Wellington Hockey this season:

- ◇ Wellington A (Hatch Cup): Blake Whitfield, Emileo Rosson (non-travelling reserve)
- ◇ Wellington B (Curtis Cup): Emileo Rosson, Matty Prentice

Good luck for the tournaments and the rep season ahead!

LOST PROPERTY

Lost property will be out on display this week by the netball/tennis courts on fine days. Anything un-named/unclaimed will be donated to the Koha Shed in Kapiti.



COMMUNITY NOTICES

Please note—community notices are accepted on a “publication if space allows” basis (thus no guarantee of publication can be given) three times per term (start/middle/end); **a small contribution of \$10 to the school for short “business” notices is appreciated before publication**; and finally and importantly, the publishing in the school newsletter of any community notice does not imply school sanctioning of, support for, or knowledge of the event or activity described.

sKids: sKids Kenakena specialises in delivering quality before school, after school and holiday programmes. We strive to create a fun and safe environment that our kids just love. Now taking bookings for Term 3. For more info please call Jools Da Silva on 021 0254 3249 or email jools@skids.co.nz.

Repair Café (Sponsored by KCDC): Free event ... Restore! Reuse! Repurpose! On Sunday, 7 July from 10am-2pm at St Peters Hall, Paekakariki. Electrical and electronic fix or advice; sewing repairs; bees wax wrap refreshes; bike repairs; Menzshed; small mechanical repairs or advice; tool sharpening; toy mending etc. Bring a coin for the Scouts café.

Winter S.T.E.M. Holiday Programme: Monday, 8 July-Friday, 12 July. Ludicrous LEGO/Supernova Space/Culinary Chemistry/Loving Life/Crafty Construction. www.enrolmy.com/the-go-club. Loads of science, tech, engineering and maths activities and crafts for kids 5+ with a special coding option for full week bookings aged 8+.

Kapiti Parents & Carers “Monthly Meet”: Supporting families of children with learning, social, emotional and behavioural challenges. These monthly meets have been set up by a parent for parents/caregivers of children with any of the above challenges. The meet will provide a place for support, encouragement to learn and ask questions of our expert presenters. Held at the Island Custom Creative Centre, Lindale Village, Paraparaumu. Further details can be found on Facebook at <https://www.facebook.com/groups/383885619062888/> or see the flier on the noticeboard at the office.

Tennis Holiday Programme: Paraparaumu Beach Tennis Club, Percival Road, Paraparaumu Beach. First week of the holidays (8-10 July) from 9am-12pm. \$30/day. Contact Leonie on leonietennisinc@gmail.com or ph 021 169 0603.

Fundraiser for Canini Beehive School & Childrens Home in Kenya: Pub quiz night at the Jolly Pub, Mazengarb Road on Wednesday, 10 July at 7pm. Tickets \$10pp; teams of 6. Includes bingo, raffle, auction. Buy tickets in advance from Val on 298 7955.



We are passionate and keen to teach your child the important lifesaving skill of ‘learning to swim’. All levels catered for, from babies to adults. We have 24 years of experience, a warm non-chlorinated pool, we are exclusively swimming lessons and we offer weekly payment of fees

Many thousands of Kapiti Coast children are now strong efficient swimmers because of the tuition we have provided them with and we are now teaching the next generation. Give your child the gift of life.

For bookings and information visit our website www.swimminglessons.co.nz, call 2972465 or email klts@xtra.co.nz



Paraparaumu Beach School years 7/8 are fundraising for a camp. Please support us by purchasing Kiwi Wraps, an eco-friendly alternative to plastic wrap.

"Wrap your food in style with Kiwi Wraps, the reusable and biodegradable alternative to plastic food wrap. Handmade in New Zealand with a combination of beautiful cotton fabric, beeswax, natural tree resin and jojoba oil".



Available in a range of packs, we have brought you the most popular sizes (note - the images are examples - packs will arrive in a variation of prints to suit):



Pack Size	Price
Boys Lunch Pack (small & medium wrap)	\$17
Girls Lunch Pack (small & medium wrap)	\$17
Neutral Lunch Pack (small & medium wrap)	\$17
Large Wrap	\$14
Family Pack (small, medium & large wrap)	\$29



Small = 19x21cm (crackers/cheese/top of a jar size)

Medium = 26x32cm (sandwiches/snacks/cover a small bowl)

Large = 33x37cm (salad bowls/half a watermelon/small loaf of bread)

Please order your wraps via the online school shop (Kindo) website -
<http://paraparaumubeach.school.nz/Web/678/> (or for help please see school
 reception or email Nicola Goddard on nicolagoddard40@gmail.com)
 Orders are being taken between Weds 19 June - Weds 3 July. Your wraps will be
 available for collection at the school office during the first week of term 3.